

The first is serious,  
the second is sad,  
the third is mystic,  
the fourth is harmonious,  
the fifth makes happy,  
the sixth is devout,  
the seventh angelical,  
and the eighth is perfect.

– *Guido of Arezzo (c. 990-1050)*

The first mode lends to any feeling,  
the second is suitable for the sad things,  
the third is vehement,  
the fourth has tender effects,  
the fifth is fitting for those who are happy,  
the sixth for those of proven piety,  
the seventh belongs to the youth,  
the eighth one to the knowledge .

– *Adam of Fulda (c.1445-1505)*

# LIBER PARVUS MODORUM

P. Antonio Ruffo, OSB, paratus

II Mense, MMVIII

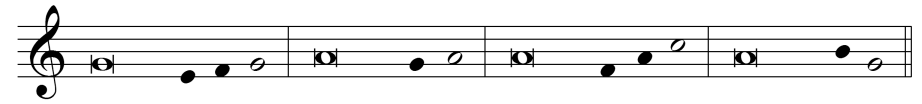
# VIII

(*Hypermixolydian*)

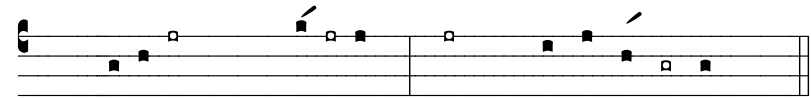
Dominant: C

Final: G

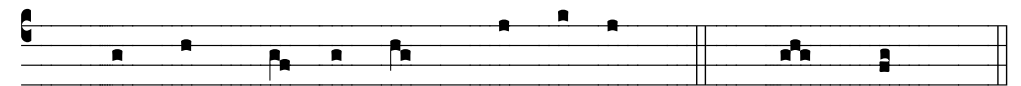
*St. Meinrad Psalm Tone:*



*Gregorian Simple Psalm Tone:*



*Characteristic Phrases:*



Vé - ni   Cre - á - tor   Spí - ri - tus.   A - men.  
*Come   Creator   Spirit*

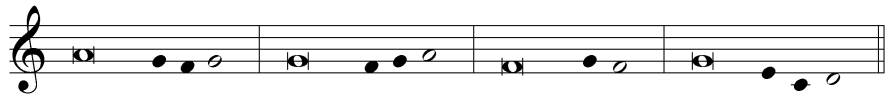
# I

(Dorian)

Dominant: A

Final: D

*St. Meinrad Psalm Tone:*



*Gregorian Simple Psalm Tone:*



*Characteristic Phrases:*

Ro - rá - te. Pú - e - ri He - brae - ó - rum. A - men.  
*bedew children of-Hebrews*

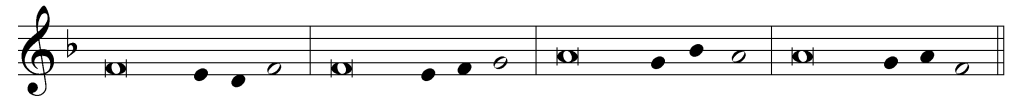
# VI

(Hypolydian)

Dominant: A

Final: F

*St. Meinrad Psalm Tone:*



*Gregorian Simple Psalm Tone:*



*Characteristic Phrases:*

Ré - qui - em. Sán - ctus.  
*rest holy*

# VII

(Myxolydian)

Dominant: D

Final: G

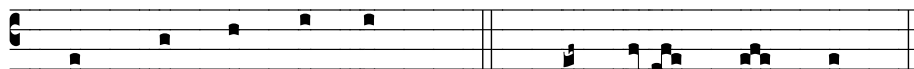
*St. Meinrad Psalm Tone: (D = G; G = C)*



*Gregorian Simple Psalm Tone:*



*Characteristic Phrases:*



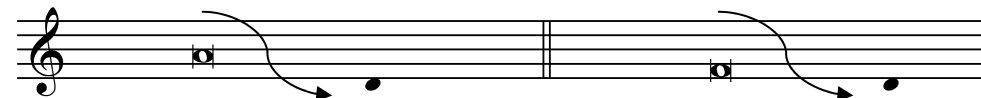
In pa - ra - dí - sum.  
*into paradise*

Al - le - lu - ia.

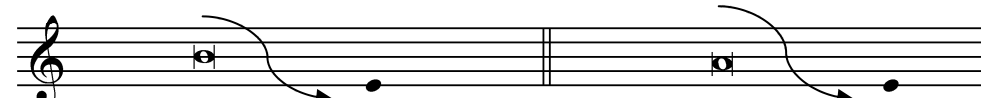
# The Eight Modes

*AUTHENTIC*  
Dominant → Final

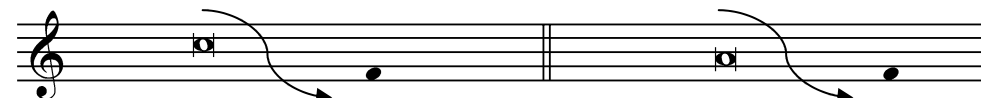
*PLAGAL*  
Dominant → Final



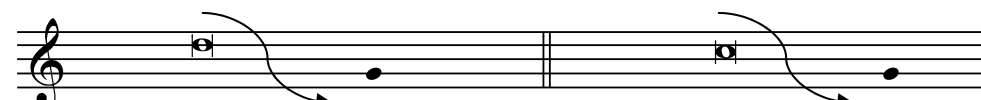
D:  
I - II



E:  
III - IV



F:  
V - VI



G:  
VII - VIII



# V

(Lydian)

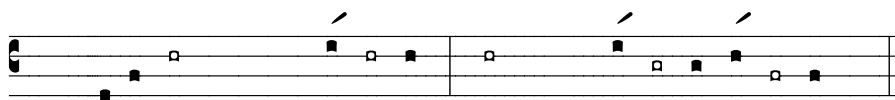
Dominant: C

Final: F

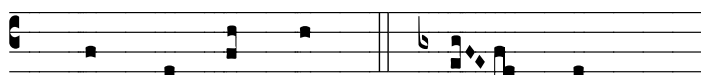
*St. Meinrad Psalm Tone:*



*Gregorian Simple Psalm Tone:*



*Characteristic Phrases:*



Al - le - lú - ia.

é - i.

*to-him/her*

# II

(Hypodorian)

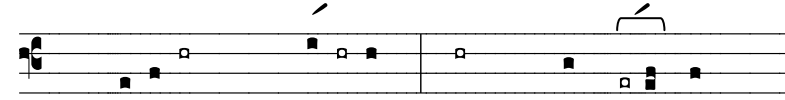
Dominant: F

Final: D

*St. Meinrad Psalm Tone:*



*Gregorian Simple Psalm Tone:*



*Characteristic Phrases:*



Ví - am pru - dén - ti - ae.

An - ge - ló - rum.

*way of-prudence*

*of-the-angels*